

CEUS: A Cost-Effective Alternative Imaging Modality for Focal Liver Lesions (FLL) characterization^{1,2}

GL-SV-2500006

CEUS is recommended in FLL Characterization due to its proven accuracy, offering **benefits for patients and facilities**:

Save Resources

+

Increase Throughput

=

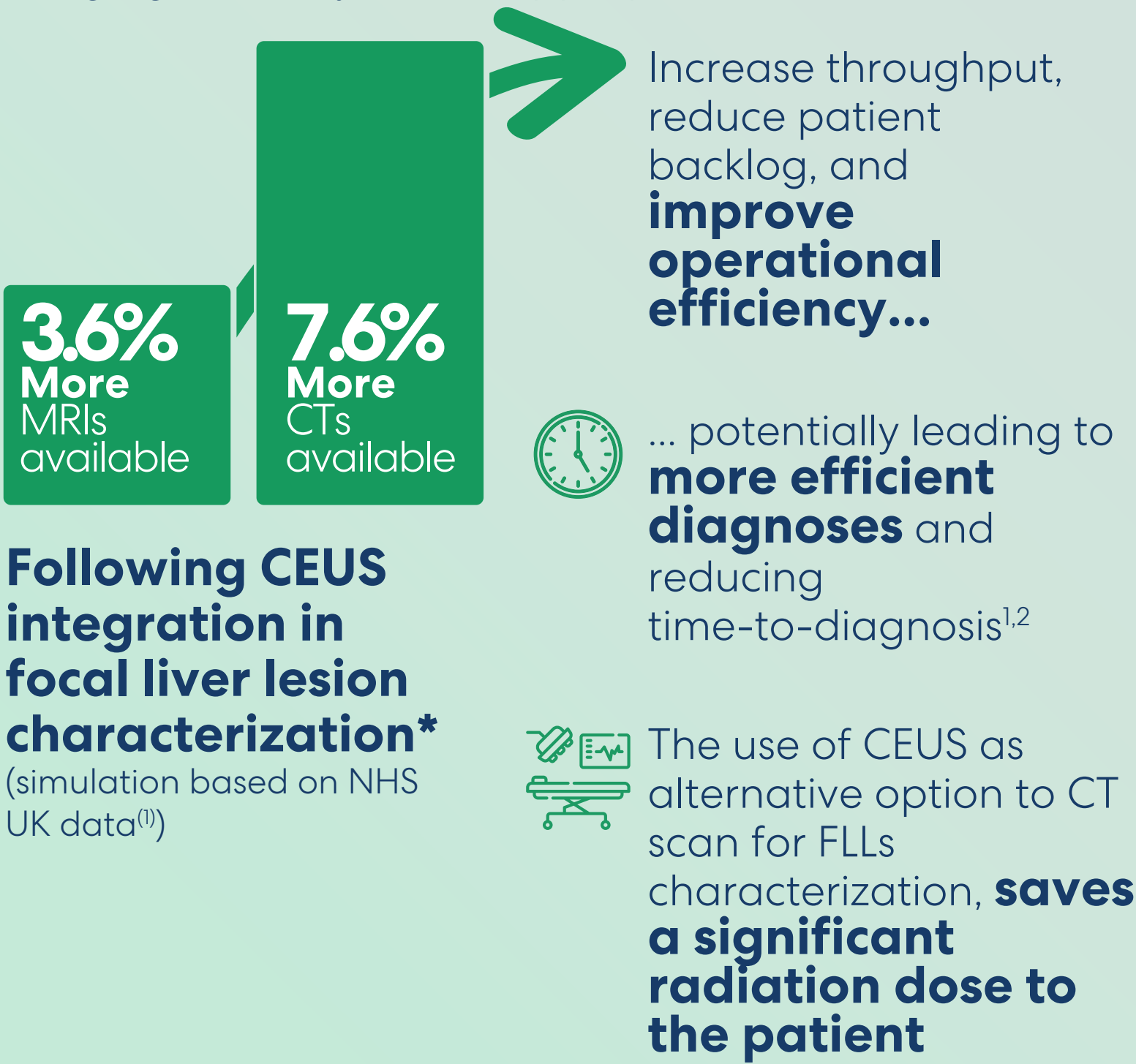
Improve Efficiency



CEUS offers comparable diagnostic information as CT or MRI for FLL characterization **at a lower cost**, reducing the need for more expensive modalities

CEUS is a low energy-intensive option compared to CT and MRI³

At the same time, by offering CEUS as an alternative imaging modality where appropriate, facilities can:



Modality	Energy per year (avg)
CEUS	2500 kWh
CT	20000-35000 kWh
MRI	80000-170000 kWh

Lower energy consumption is related to economic savings and better environmental footprint

↓

Steps to improve sustainability can include choosing the least energy-intensive option among the scan types suitable for each patient and condition³



Given its high accuracy combined with lower costs, NICE recommends CEUS as a cost-effective diagnostic modality in the characterization of incidental FLL²



Bracco's Sonovue is the only imaging agent approved in the EU for CEUS in non-cardiac applications, providing greater access to CEUS benefits

References:

1) O'Brien M, et al. Assessing the impact and resource implications of contrast-enhanced ultrasound on workflow of patients with incidental focal liver lesions on the UK national health service. Acta Radiol Open. 2023;12(6):20584601231183131. Published 2023 Jun 13. doi:10.1177/20584601231183131; 2) Overview | **SonoVue – contrast agent for contrast-enhanced ultrasound imaging of the liver** | Guidance | NICE. www.nice.org.uk. <https://www.nice.org.uk/guidance/dg5>; 3) Elmar M. Merkle et al. **The Impact of Modern Imaging Techniques on Carbon Footprints: Relevance and Outlook** European urology focus 9 (2023) 891–893
Before use of a product, please refer to locally approved SmPC which will be made available on request

